

LEGEND:

	EXISTING WALL
	NEW WALL
	FLOOR TILES
	CARPET
	NOT IN SCOPE
	TO DEMOLISH

**GENERAL DISCLAIMER & COMPLIANCE STATEMENT**

- THESE DRAWINGS AND SPECIFICATIONS ARE FOR DESIGN INTENT PURPOSES ONLY. THE BUILDER IS RESPONSIBLE FOR ENSURING ALL CONSTRUCTION COMPLIES WITH THE LATEST EDITION OF THE NATIONAL CONSTRUCTION CODE (NCC), AUSTRALIAN STANDARDS, AND ALL RELEVANT LOCAL COUNCIL AND REGULATORY REQUIREMENTS.
- "ANY DISCREPANCIES BETWEEN THESE DRAWINGS, SITE CONDITIONS, OR OTHER CONSULTANT DOCUMENTS MUST BE REPORTED TO THE DESIGNER BEFORE PROCEEDING WITH WORK. THE BUILDER MUST VERIFY ALL DIMENSIONS ON-SITE PRIOR TO FABRICATION OR INSTALLATION."
- "NINE BY EIGHT STUDIO ASSUMES NO RESPONSIBILITY FOR INCORRECT CONSTRUCTION, DEVIATIONS FROM THE APPROVED DRAWINGS, OR NON-COMPLIANCE WITH APPLICABLE REGULATIONS."

**CONSTRUCTION & MATERIAL COMPLIANCE**

- "ALL MATERIALS, FINISHES, AND INSTALLATIONS MUST COMPLY WITH THE LATEST NCC, AUSTRALIAN STANDARDS, AND LOCAL AUTHORITY REQUIREMENTS, INCLUDING BUT NOT LIMITED TO:
  - o AS 1428.1 (ACCESSIBILITY AND MOBILITY)
  - o AS 4586 (SLIP RESISTANCE FOR FLOORS AND STAIRS)
  - o AS 1684 (TIMBER FRAMING CODE)
  - o AS/NZS 3000 (ELECTRICAL INSTALLATIONS - WIRING RULES)
  - o AS 4674 (DESIGN & FIT-OUT OF FOOD PREMISES, IF APPLICABLE TO BARS/KITCHENS)"
- "THE BUILDER MUST ENSURE THAT ALL MATERIALS MEET FIRE RESISTANCE AND DURABILITY REQUIREMENTS UNDER NCC VOLUME ONE, PART C (FIRE RESISTANCE) AND PART F (HEALTH AND AMENITY)."

**STRUCTURAL & SERVICES COORDINATION**

- "STRUCTURAL ELEMENTS, INCLUDING WALLS, CEILINGS, AND FLOORS, MUST BE BUILT IN ACCORDANCE WITH THE STRUCTURAL ENGINEER'S SPECIFICATIONS AND NCC REQUIREMENTS."
- "ALL MECHANICAL, ELECTRICAL, PLUMBING, AND FIRE SAFETY SERVICES MUST BE INSTALLED PER THE RELEVANT ENGINEERING DRAWINGS AND IN COMPLIANCE WITH THE BUILDING CODE OF AUSTRALIA (BCA) AND AUSTRALIAN STANDARDS."

**HOSPITALITY & PUBLIC SAFETY CONSIDERATIONS**

- "ALL STAIRCASES, RAMP, BALUSTRADES, AND ACCESSIBILITY FEATURES MUST MEET NCC VOLUME ONE, PARTS D2 AND D3, AS 1428.1, AND AS 1487."
- "EMERGENCY EXIT PATHS, FIRE DOORS, AND EGRESS REQUIREMENTS MUST COMPLY WITH NCC PART E (FIRE SAFETY) AND AS 2293 (EMERGENCY LIGHTING AND EXIT SIGNS)."
- "ALL FLOORING AND SURFACES IN WET OR HIGH-TRAFFIC AREAS MUST MEET THE SLIP RESISTANCE RATINGS AS PER AS 4586 (P4/P5 FOR WET AREAS IN PUBLIC SPACES)."

**LIABILITY & APPROVALS**

- "THESE DRAWINGS DO NOT REPLACE ENGINEERING OR TRADE-SPECIFIC SHOP DRAWINGS. THE BUILDER IS RESPONSIBLE FOR COORDINATING ALL TRADES TO ENSURE PROPER INTEGRATION OF DESIGN ELEMENTS."
- "ANY MODIFICATIONS TO THESE PLANS MUST BE REVIEWED AND APPROVED BY NINE BY EIGHT STUDIO BEFORE IMPLEMENTATION. UNAUTHORIZED CHANGES MAY VOID LIABILITY AND WARRANTY OBLIGATIONS."
- "FINAL APPROVALS FROM LOCAL COUNCIL AND CERTIFYING AUTHORITIES ARE THE RESPONSIBILITY OF THE BUILDER AND/OR CLIENT."

**NOTES:**

1. THE COPYRIGHT OF THIS DRAWING IS VESTED IN NINE BY EIGHT STUDIO PTY LTD AND IT MAY NOT BE REPRODUCED IN WHOLE OR PART OR USED FOR THE MANUFACTURE OF ANY ARTICLE WITHOUT THE EXPRESS PERMISSION OF THE COPYRIGHT HOLDERS.
2. FINAL SITE MEASURES TO BE CONDUCTED AND CONFIRMED PRIOR TO CONSTRUCTION
3. THIS DRAWING IS TO BE READ IN CONJUNCTION WITH ALL RELEVANT ARCHITECTS, SERVICE ENGINEERS AND NINE BY EIGHT STUDIO PTY LTD DRAWINGS AND SPECIFICATIONS.

BUILDER TO ENSURE ALL ELEMENTS MEET THE REQUIRED FIRE RATING TO COMPLY WITH NCC AND RELEVANT AUSTRALIAN STANDARDS

**DRAFT**

9	ISSUE TO BUILDER FOR PRICING	SMF	30/03/2026
8	ISSUE TO BUILDER FOR PRICING	SMF	24/03/2026
7	ISSUE TO BUILDER FOR PRICING	CGC	20/03/2026
6	ISSUE TO BUILDER FOR PRICING	GL	11/03/2026
5	ISSUE TO BUILDER FOR PRICING	SMF	04/03/2026
4	ISSUE TO BUILDER FOR PRICING	CGC	05/02/2026
3	ISSUE TO BUILDER FOR PRICING	CGC	10/12/2025
2	ISSUE TO BUILDER FOR PRICING	CGC	09/12/2025
1	ISSUE TO BUILDER FOR PRICING	CGC	09/09/2025

STATUS: **PRELIMINARY ISSUE**



NINE BY EIGHT STUDIO PTY LTD  
LEVEL 17 ANGEL PLACE  
123 PITT ST  
SYDNEY NSW 2000

KEY:

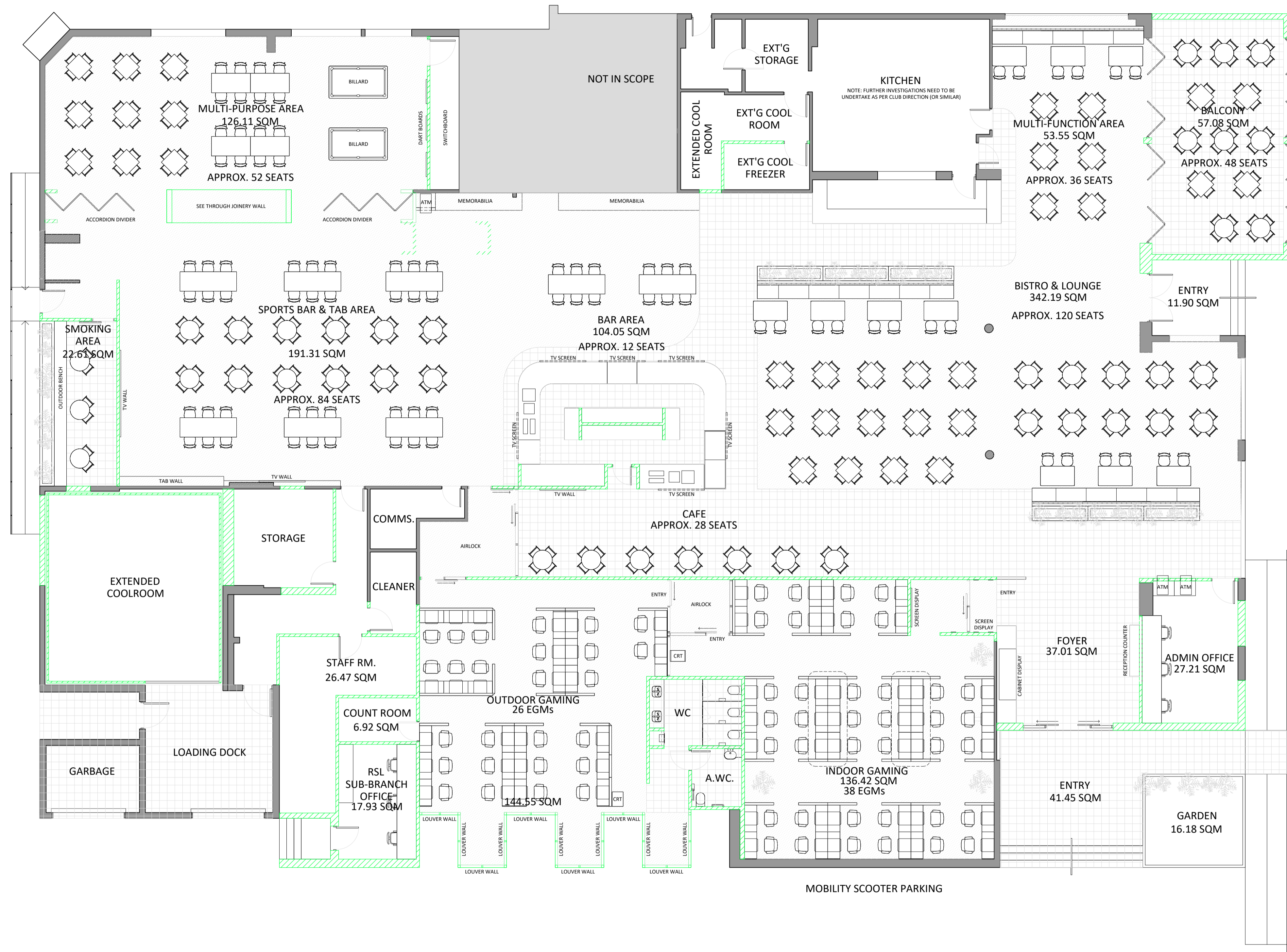
SITE: KARUAH RSL CLUB  
436 TAREAN RD, KARUAH NSW  
2324, Australia

TITLE: PROPOSED FLOOR PLAN

SCALE: 1:100@A1 DRAWN BY: SMF

**AD102A**

1 PROPOSED FLOOR PLAN (OPTION 1)  
AD102A SCALE: 1:100



LEGEND:

[Solid Grey]	EXISTING WALL
[Green Hatched]	NEW WALL
[Grid Pattern]	FLOOR TILES
[Dotted Pattern]	CARPET
[Dark Grey]	NOT IN SCOPE
[Red Line]	TO DEMOLISH

**GENERAL DISCLAIMER & COMPLIANCE STATEMENT**

- THESE DRAWINGS AND SPECIFICATIONS ARE FOR DESIGN INTENT PURPOSES ONLY. THE BUILDER IS RESPONSIBLE FOR ENSURING ALL CONSTRUCTION COMPLIES WITH THE LATEST EDITION OF THE NATIONAL CONSTRUCTION CODE (NCC), AUSTRALIAN STANDARDS, AND ALL RELEVANT LOCAL COUNCIL AND REGULATORY REQUIREMENTS.
- "ANY DISCREPANCIES BETWEEN THESE DRAWINGS, SITE CONDITIONS, OR OTHER CONSULTANT DOCUMENTS MUST BE REPORTED TO THE DESIGNER BEFORE PROCEEDING WITH WORK. THE BUILDER MUST VERIFY ALL DIMENSIONS ON-SITE PRIOR TO FABRICATION OR INSTALLATION."
- "NINE BY EIGHT STUDIO ASSUMES NO RESPONSIBILITY FOR INCORRECT CONSTRUCTION, DEVIATIONS FROM THE APPROVED DRAWINGS, OR NON-COMPLIANCE WITH APPLICABLE REGULATIONS."

**CONSTRUCTION & MATERIAL COMPLIANCE**

- "ALL MATERIALS, FINISHES, AND INSTALLATIONS MUST COMPLY WITH THE LATEST NCC, AUSTRALIAN STANDARDS, AND LOCAL AUTHORITY REQUIREMENTS, INCLUDING BUT NOT LIMITED TO:
  - o AS 1428.1 (ACCESSIBILITY AND MOBILITY)
  - o AS 4586 (SLIP RESISTANCE FOR FLOORS AND STAIRS)
  - o AS 1684 (TIMBER FRAMING CODE)
  - o AS/NZS 3000 (ELECTRICAL INSTALLATIONS - WIRING RULES)
  - o AS 4674 (DESIGN & FIT-OUT OF FOOD PREMISES, IF APPLICABLE TO BARS/KITCHENS)"
- "THE BUILDER MUST ENSURE THAT ALL MATERIALS MEET FIRE RESISTANCE AND DURABILITY REQUIREMENTS UNDER NCC VOLUME ONE, PART C (FIRE RESISTANCE) AND PART F (HEALTH AND AMENITY)."

**STRUCTURAL & SERVICES COORDINATION**

- "STRUCTURAL ELEMENTS, INCLUDING WALLS, CEILINGS, AND FLOORS, MUST BE BUILT IN ACCORDANCE WITH THE STRUCTURAL ENGINEER'S SPECIFICATIONS AND NCC REQUIREMENTS."
- "ALL MECHANICAL, ELECTRICAL, PLUMBING, AND FIRE SAFETY SERVICES MUST BE INSTALLED PER THE RELEVANT ENGINEERING DRAWINGS AND IN COMPLIANCE WITH THE BUILDING CODE OF AUSTRALIA (BCA) AND AUSTRALIAN STANDARDS."

**HOSPITALITY & PUBLIC SAFETY CONSIDERATIONS**

- "ALL STAIRCASES, RAMP, BALUSTRADES, AND ACCESSIBILITY FEATURES MUST MEET NCC VOLUME ONE, PARTS D2 AND D3, AS 1428.1, AND AS 1487."
- "EMERGENCY EXIT PATHS, FIRE DOORS, AND EGRESS REQUIREMENTS MUST COMPLY WITH NCC PART E (FIRE SAFETY) AND AS 2293 (EMERGENCY LIGHTING AND EXIT SIGNS)."
- "ALL FLOORING AND SURFACES IN WET OR HIGH-TRAFFIC AREAS MUST MEET THE SLIP RESISTANCE RATINGS AS PER AS 4586 (P4/P5 FOR WET AREAS IN PUBLIC SPACES)."

**LIABILITY & APPROVALS**

- "THESE DRAWINGS DO NOT REPLACE ENGINEERING OR TRADE-SPECIFIC SHOP DRAWINGS. THE BUILDER IS RESPONSIBLE FOR COORDINATING ALL TRADES TO ENSURE PROPER INTEGRATION OF DESIGN ELEMENTS."
- "ANY MODIFICATIONS TO THESE PLANS MUST BE REVIEWED AND APPROVED BY NINE BY EIGHT STUDIO BEFORE IMPLEMENTATION. UNAUTHORIZED CHANGES MAY VOID LIABILITY AND WARRANTY OBLIGATIONS."
- "FINAL APPROVALS FROM LOCAL COUNCIL AND CERTIFYING AUTHORITIES ARE THE RESPONSIBILITY OF THE BUILDER AND/OR CLIENT."

1. THE COPYRIGHT OF THIS DRAWING IS VESTED IN NINE BY EIGHT STUDIO PTY LTD AND IT MAY NOT BE REPRODUCED IN WHOLE OR PART OR USED FOR THE MANUFACTURE OF ANY ARTICLE WITHOUT THE EXPRESS PERMISSION OF THE COPYRIGHT HOLDERS.

2. FINAL SITE MEASURES TO BE CONDUCTED AND CONFIRMED PRIOR TO CONSTRUCTION

3. THIS DRAWING IS TO BE READ IN CONJUNCTION WITH ALL RELEVANT ARCHITECT'S, SERVICE ENGINEERS AND NINE BY EIGHT STUDIO PTY LTD DRAWINGS AND SPECIFICATIONS.

BUILDER TO ENSURE ALL ELEMENTS MEET THE REQUIRED FIRE RATING TO COMPLY WITH NCC AND RELEVANT AUSTRALIAN STANDARDS

NOTES:

**DRAFT**

9	ISSUE TO BUILDER FOR PRICING	SMF	30/03/2026
8	ISSUE TO BUILDER FOR PRICING	SMF	24/03/2026
7	ISSUE TO BUILDER FOR PRICING	CGC	20/03/2026
6	ISSUE TO BUILDER FOR PRICING	GL	11/03/2026
5	ISSUE TO BUILDER FOR PRICING	SMF	04/03/2026
4	ISSUE TO BUILDER FOR PRICING	CGC	05/02/2026
3	ISSUE TO BUILDER FOR PRICING	CGC	10/12/2025
2	ISSUE TO BUILDER FOR PRICING	CGC	09/12/2025
1	ISSUE TO BUILDER FOR PRICING	CGC	09/09/2025

STATUS: **PRELIMINARY ISSUE**



NINE BY EIGHT STUDIO PTY LTD  
LEVEL 17 ANGEL PLACE  
123 PITT ST  
SYDNEY NSW 2000

KEY:

SITE: KARUAH RSL CLUB  
436 TAREAN RD, KARUAH NSW  
2324, Australia

TITLE: PROPOSED FLOOR PLAN

SCALE: 1:100@A1 DRAWN BY: SMF

**AD102A**

1 PROPOSED FLOOR PLAN (OPTION 2)  
AD102A SCALE: 1:100

LEGEND:	
	EXISTING WALL
	NEW WALL
	FLOOR TILES
	CARPET
	NOT IN SCOPE
	TO DEMOLISH

**GENERAL DISCLAIMER & COMPLIANCE STATEMENT**

- THESE DRAWINGS AND SPECIFICATIONS ARE FOR DESIGN INTENT PURPOSES ONLY. THE BUILDER IS RESPONSIBLE FOR ENSURING ALL CONSTRUCTION COMPLIES WITH THE LATEST EDITION OF THE NATIONAL CONSTRUCTION CODE (NCC), AUSTRALIAN STANDARDS, AND ALL RELEVANT LOCAL COUNCIL AND REGULATORY REQUIREMENTS.
- ANY DISCREPANCIES BETWEEN THESE DRAWINGS, SITE CONDITIONS, OR OTHER CONSULTANT DOCUMENTS MUST BE REPORTED TO THE DESIGNER BEFORE PROCEEDING WITH WORK. THE BUILDER MUST VERIFY ALL DIMENSIONS ON-SITE PRIOR TO FABRICATION OR INSTALLATION.
- NINE BY EIGHT STUDIO ASSUMES NO RESPONSIBILITY FOR INCORRECT CONSTRUCTION, DEVIATIONS FROM THE APPROVED DRAWINGS, OR NON-COMPLIANCE WITH APPLICABLE REGULATIONS.

**CONSTRUCTION & MATERIAL COMPLIANCE**

- ALL MATERIALS, FINISHES, AND INSTALLATIONS MUST COMPLY WITH THE LATEST NCC, AUSTRALIAN STANDARDS, AND LOCAL AUTHORITY REQUIREMENTS, INCLUDING BUT NOT LIMITED TO:
  - AS 1428.1 (ACCESSIBILITY AND MOBILITY)
  - AS 4586 (SLIP RESISTANCE FOR FLOORS AND STAIRS)
  - AS 1684 (TIMBER FRAMING CODE)
  - AS/NZS 3000 (ELECTRICAL INSTALLATIONS - WIRING RULES)
  - AS 4674 (DESIGN & FIT-OUT OF FOOD PREMISES, IF APPLICABLE TO BARS/KITCHENS)
- THE BUILDER MUST ENSURE THAT ALL MATERIALS MEET FIRE RESISTANCE AND DURABILITY REQUIREMENTS UNDER NCC VOLUME ONE, PART C (FIRE RESISTANCE) AND PART F (HEALTH AND AMENITY).

**STRUCTURAL & SERVICES COORDINATION**

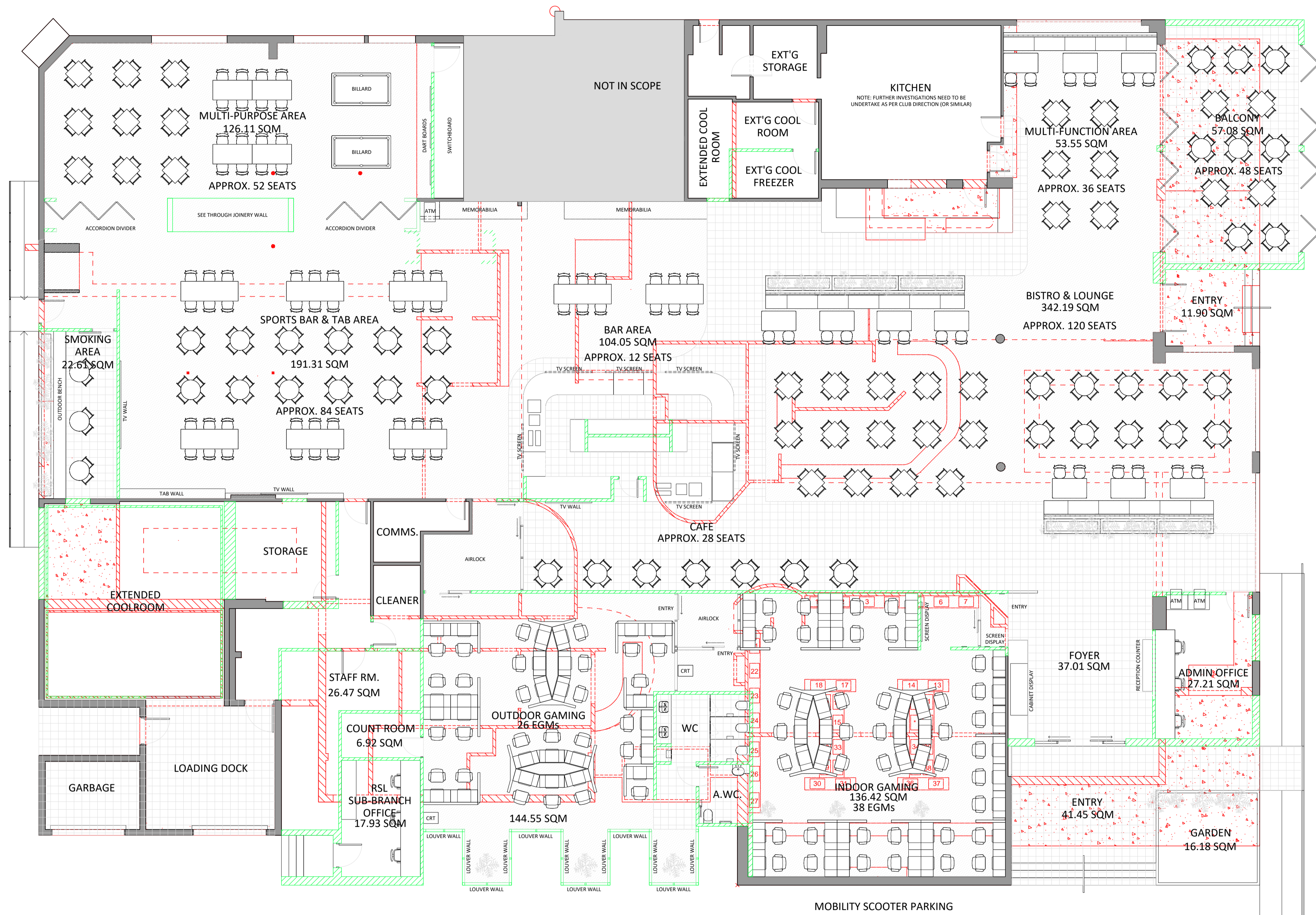
- STRUCTURAL ELEMENTS, INCLUDING WALLS, CEILINGS, AND FLOORS, MUST BE BUILT IN ACCORDANCE WITH THE STRUCTURAL ENGINEER'S SPECIFICATIONS AND NCC REQUIREMENTS.
- ALL MECHANICAL, ELECTRICAL, PLUMBING, AND FIRE SAFETY SERVICES MUST BE INSTALLED PER THE RELEVANT ENGINEERING DRAWINGS AND IN COMPLIANCE WITH THE BUILDING CODE OF AUSTRALIA (BCA) AND AUSTRALIAN STANDARDS.

**HOSPITALITY & PUBLIC SAFETY CONSIDERATIONS**

- ALL STAIRCASES, RAMPS, BALUSTRADES, AND ACCESSIBILITY FEATURES MUST MEET NCC VOLUME ONE, PARTS D2 AND D3, AS 1428.1, AND AS 1487.
- EMERGENCY EXIT PATHS, FIRE DOORS, AND EGRESS REQUIREMENTS MUST COMPLY WITH NCC PART E (FIRE SAFETY) AND AS 2293 (EMERGENCY LIGHTING AND EXIT SIGNS).
- ALL FLOORING AND SURFACES IN WET OR HIGH-TRAFFIC AREAS MUST MEET THE SLIP RESISTANCE RATINGS AS PER AS 4586 (P4/P5 FOR WET AREAS IN PUBLIC SPACES).

**LIABILITY & APPROVALS**

- THESE DRAWINGS DO NOT REPLACE ENGINEERING OR TRADE-SPECIFIC SHOP DRAWINGS. THE BUILDER IS RESPONSIBLE FOR COORDINATING ALL TRADES TO ENSURE PROPER INTEGRATION OF DESIGN ELEMENTS.
- ANY MODIFICATIONS TO THESE PLANS MUST BE REVIEWED AND APPROVED BY NINE BY EIGHT STUDIO BEFORE IMPLEMENTATION. UNAUTHORIZED CHANGES MAY VOID LIABILITY AND WARRANTY OBLIGATIONS.
- FINAL APPROVALS FROM LOCAL COUNCIL AND CERTIFYING AUTHORITIES ARE THE RESPONSIBILITY OF THE BUILDER AND/OR CLIENT.



**NOTES:**

- THE COPYRIGHT OF THIS DRAWING IS VESTED IN NINE BY EIGHT STUDIO PTY LTD AND IT MAY NOT BE REPRODUCED IN WHOLE OR PART OR USED FOR THE MANUFACTURE OF ANY ARTICLE WITHOUT THE EXPRESS PERMISSION OF THE COPYRIGHT HOLDERS.
- FINAL SITE MEASURES TO BE CONDUCTED AND CONFIRMED PRIOR TO CONSTRUCTION
- THIS DRAWING IS TO BE READ IN CONJUNCTION WITH ALL RELEVANT ARCHITECTS, SERVICE ENGINEERS AND NINE BY EIGHT STUDIO PTY LTD DRAWINGS AND SPECIFICATIONS.

BUILDER TO ENSURE ALL ELEMENTS MEET THE REQUIRED FIRE RATING TO COMPLY WITH NCC AND RELEVANT AUSTRALIAN STANDARDS

**DRAFT**

NO.	ISSUE TO BUILDER FOR PRICING	SMF	DATE
9	ISSUE TO BUILDER FOR PRICING	SMF	30/03/2026
8	ISSUE TO BUILDER FOR PRICING	SMF	25/03/2026
7	ISSUE TO BUILDER FOR PRICING	CGC	20/03/2026
6	ISSUE TO BUILDER FOR PRICING	GL	11/03/2026
5	ISSUE TO BUILDER FOR PRICING	SMF	04/03/2026
4	ISSUE TO BUILDER FOR PRICING	CGC	05/02/2026
3	ISSUE TO BUILDER FOR PRICING	CGC	10/12/2025
2	ISSUE TO BUILDER FOR PRICING	CGC	09/12/2025
1	ISSUE TO BUILDER FOR PRICING	CGC	09/09/2025

STATUS: **PRELIMINARY ISSUE**



NINE BY EIGHT STUDIO PTY LTD  
 LEVEL 17 ANGEL PLACE  
 123 PITT ST  
 SYDNEY NSW 2000

KEY:

SITE: KARUAH RSL CLUB  
 436 TAREAN RD, KARUAH NSW  
 2324, Australia

TITLE: PROPOSED FLOOR PLAN

SCALE: 1:100@A1 DRAWN BY: SMF

**AD102B**

**1** PROPOSED FLOOR PLAN  
 AD102B SCALE: 1:100